



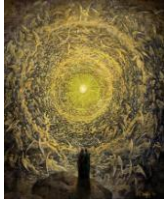
PETER RELPH

---

*Les Anges Encerclant*

---

For Organ



*For Roger Williams*



# *Les Anges Encerclant*

## for Organ

(2016)

---

### PROGRAMME NOTES

*Les Anges Encerclant* is a piece for organ, based on an harmonic series from a spectral analysis of the Magdalene College Organ playing a low F in the pedals. The piece is based around a series of expanding rhythmic cycles; always ending with three loud chords reminiscent of the cries of 'Holy, Holy, Holy' from the Sanctus. With each repetition of these chords; harmonic possibility is expanded with the next of upper partials added. A quote from Messiaen's *La Nativite Du Seigneur* was used as inspiration for the music.

Duration: 3m. 20s  
Cover Photograph: Circling angels from Dantes' *Paradiso*  
For More Information: <http://peterrelph11.wix.com/composition>

### PERFORMANCE NOTES

Manual markings are suggestions only and can be adapted for ease of performance.

The number above boxed notes indicates the number of repetitions of the fragment.

PWR 2016

For Roger Williams  
*Les Anges Encerclant*

PETER RELPH

Musical score for the first system. It features a grand staff with three staves. The top staff is in treble clef, and the bottom two are in bass clef. The time signature is 4/4, with a tempo marking of quarter note = 96. The first measure is marked *f* and Man. 1. The second and third measures are in 2/4 time. The fourth measure is in 4/4 time. The piece ends with a Man. 2 section marked *p*.

Musical score for the second system, starting at measure 5. It features a grand staff with three staves. The tempo is Adagissimo, quarter note = 48, with a 'molto accel.' section. A dashed line indicates a tempo change to quarter note = c.96. The system ends with a 'molto rit.' section in 4/4 time, marked with a first ending bracket (1) and a final 4/4 time signature. The piece is marked *p*.

Musical score for the third system, starting at measure 9. It features a grand staff with three staves. The tempo is Tempo. 1, quarter note = 96. The first measure is marked *f* and Man. 1. The second and third measures are in 2/4 time. The fourth measure is in 4/4 time. The piece ends with a Man. 2 section marked *p*.

Musical score for the fourth system, starting at measure 13. It features a grand staff with three staves. The tempo is Adagissimo, quarter note = 48, with a 'molto accel.' section. A dashed line indicates a tempo change to quarter note = c.96. The system ends with a section marked with an 8-measure bracket. The piece is marked *p*.

**B**

Tempo. 1  
Man. 1

molto rit. .

16

5

1

4/4

2/4

4/4

f

Man. 1

Adagissimo ♩ = 48

molto accel. . . . .

21

4/4

f

Man. 2

p

6

Man. 2

p

(♩ = c.96)

25

1

8

29

8

5

1

4/4

4/4

molto rit. .

**C** (♩ = c.96)

Man. 1

Tempo. 1

33

4/4

2/4

4/4

3/4

f

Man. 1

Man. 3

f

Adagissimo ♩ = 48 molto accel. . . . .

37 **Man. 3** 6 **Man 2** 1 6 **Man 2**

*f* *p*

42 1 4

molto rit. . . . .

46 4 5 1 4/4

**D** (♩ = c.96)

49 **Man. 1** **Tempo. 1** 4/4 2/4 4/4 **Man. 3**

*f* *f*

Adagissimo ♩ = 48 molto accel. . . . .

53 1 6 **Man. 3 \*** **Man. 2** *f* *mp* *dim. poco a poco*

+

\* from here to end, manual markings indicate both staves  
 + hold pedal note until indicated

57

Man. 3

*f*

61

Man. 2

*mp*

*dim. poco a poco*

65

Man. 3

*f*

Man. 2

*mp*

*dim. poco a poco*

68

Man. 3

*f*

Man. 2

*mp*

*dim. poco a poco*

70

1

Man. 3

*f*

Man. 2

*mp*

*dim. poco a poco*

73

1

3

Man. 3

*f*

Man. 2

*mp*

1 5

77

4

Man. 3

*f*

4

1

4

1

4/4

**E** molto rit. . . . . Adagissimo

82

4/4

Man. 1

*ff*

6/8

full organ

*fff*

2/4

4/4

85

4/4

2/4

4/4

4/4



